

TEXAS SCHOOL FOR THE DEAF **REOPENING PLAN** TOGETHER WE WILL...



2020-2021



Community health data continues to change and TSD is continuously monitoring this information and adjusting plans accordingly. These plans are subject to change based on evolving conditions.

Last updated 08/10/2020

Table of Contents

| | |
|--|-----------|
| INTRODUCTION | 4 |
| 2020 – 2021 SCHOOL CALENDAR..... | 5 |
| GENERAL INFORMATION..... | 6 |
| SCHOOL SAFETY MEASURES | 7 |
| SAFETY GUIDELINES AT A GLANCE | 7 |
| APPROACH TO SAFETY | 8 |
| TSD SAFETY PROTOCOLS..... | 9 |
| TSD SAFETY RESPONSES..... | 10-12 |
| SOCIAL DISTANCING PRACTICES | 13 |
| CAMPUS VISITORS..... | 13 |
| PHYSICAL ARRANGEMENTS..... | 13 |
| CLASSROOMS..... | 13 |
| HALLWAYS..... | 13 |
| BATHROOMS | 13 |
| PHYSICAL ACTIVITIES..... | 13 |
| PLAYGROUNDS..... | 13 |
| FOOD SERVICES | 14 |
| TRANSPORTATION | 14 |
| DAY STUDENT TRANSPORTATION | 14 |
| HOMEGOING TRANSPORTATION (See Residential)..... | 22 |
| PERSONAL PREVENTATIVE PRACTICES | 14 |
| SCREENING FOR COVID-19 SYMPTOMS – STAFF | 14 |
| STAFF REQUEST FOR ACCOMMODATIONS | 14 |
| SCREENING FOR COVID-19 SYMPTOMS – STUDENTS..... | 14 |
| STUDENTS OR STAFF DISPLAYING COVID-19 SYMPTOMS..... | 15 |
| STUDENTS OR STAFF CONFIRMED OR SUSPECTED WITH COVID-19 | 15 |
| MITIGATING SPREAD | 15 |
| CLEANING AND SANITATION..... | 15 |
| HAND SANITIZER | 15 |
| FACE COVERING | 16 |
| ON-CAMPUS LEARNING | 16 |
| TEACHING AND LEARNING | 16 |
| CURRICULUM..... | 16 |
| SCHOLOGY® LEARNING MANAGEMENT SYSTEM | 16 |
| INSTRUCTION | 17 |
| INSTRUCTIONAL MODELS..... | 17 |
| VIRTUAL LEARNING..... | 17 |
| INSTRUCTIONAL PROGRAMS IN-PERSON AND VIRTUAL SCHEDULES | 18-20 |
| SPECIALTY SCHOOLS AND PROGRAMMING..... | 21 |
| RESIDENTIAL AND AFTER SCHOOL PROGRAMS | 21 |
| WEEKLY HOMEGOING..... | 21 |
| VIRTUAL LEARNING SUPPORT FROM THE DORMS..... | 21 |
| VISITORS..... | 22 |
| AFTER SCHOOL PROGRAMS | 22 |
| ATHLETICS | 22 |
| PARENT’S AND CAREGIVERS’ ROLE | 22 |
| ATTENDANCE | 22 |
| DEVICE/INTERNET REQUIRMENTS..... | 23 |
| GRADING | 23 |
| SPECIAL EDUCATION SERVICES | 23 |
| SOCIAL-EMOTIONAL SUPPORT..... | 23 |
| MENTAL AND BEHAVIORAL HEALTH SUPPORT | 23 |



Introduction

Texas School for the Deaf (TSD) is looking forward to the 2020-2021 school year and we've been planning and preparing for the future of our students this past summer. We are committed to do everything we can to safely reopen our campus. The purpose of this reopening plan is to assure the TSD community that we are prepared for both virtual and in-person instruction for our students in the safest environment possible.

This reopening guide has been developed to help guide us through this COVID-19 pandemic with a plan to support our students and school community for the 2020-2021 academic year. Though even as we plan to reopen our campus in August, we also have a plan knowing we may need to close again with very little advance warning. This means TSD staff, students and parents will need to remain prepared to quickly move between learning models designed to fit a variety of circumstances and situations.

During this COVID-19 pandemic, it is expected that the community band together to continue to provide instruction and services for students in an environment that maintains the safety and well-being of everyone. Although there is possibility that exposure may occur upon re-entry into school, all members of the TSD community should expect that every effort is being

made with appropriate precautions to safeguard the health and well-being of our school family.

In addition, we have been working closely with the Texas Education Agency (TEA) and the Centers for Disease Control and Prevention (CDC) to ensure the needs of our students, within the allowable guidelines, continue to be met.



2020-2021 School Calendar

| July 2020 | | | | | | |
|-----------|----|----|----|----|----|----|
| S | M | T | W | T | F | S |
| | | | 1 | 2 | 3 | 4 |
| 5 | 6 | 7 | 8 | 9 | 10 | 11 |
| 12 | 13 | 14 | 15 | 16 | 17 | 18 |
| 19 | 20 | 21 | 22 | 23 | 24 | 25 |
| 26 | 27 | 28 | 29 | 30 | 31 | |

| August 2020 | | | | | | |
|-------------|----|----|----|----|----|----|
| S | M | T | W | T | F | S |
| | | | | | | 1 |
| R | 3 | 4 | 5 | 6 | 7 | 8 |
| 9 | 10 | 11 | 12 | 13 | 14 | 15 |
| 16 | {A | 18 | 19 | 20 | 21 | 22 |
| 23 | 24 | 25 | 26 | X | 28 | 29 |
| 30 | 31 | | | | | |

| September 2020 | | | | | | |
|----------------|----|----|----|----|----|----|
| S | M | T | W | T | F | S |
| | | | 1 | 2 | 3 | 4 |
| 6 | R | 8 | 9 | 10 | 11 | 12 |
| 13 | 14 | 15 | 16 | 17 | 18 | 19 |
| 20 | 21 | 22 | 23 | 24 | 25 | 26 |
| 27 | 28 | 29 | 30 | | | |

| October 2020 | | | | | | |
|--------------|-----|----|----|----|----|----|
| S | M | T | W | T | F | S |
| | | | | 1 | 2 | 3 |
| 4 | 5 | 6 | 7 | 8 | 9 | 10 |
| 11 | R | 13 | 14 | 15 | 16 | 17 |
| 18 | {19 | 20 | 21 | 22 | 23 | 24 |
| 25 | 26 | 27 | 28 | 29 | 30 | 31 |

| November 2020 | | | | | | |
|---------------|----|----|----|----|----|----|
| S | M | T | W | T | F | S |
| 1 | 2 | 3 | 4 | 5 | 6 | 7 |
| 8 | 9 | 10 | X | 12 | 13 | 14 |
| 15 | 16 | 17 | 18 | 19 | 20 | 21 |
| 22 | 23 | 24 | 25 | 26 | 27 | 28 |
| 29 | 30 | | | | | |

| December 2020 | | | | | | |
|---------------|----|----|----|----|----|----|
| S | M | T | W | T | F | S |
| | | 1 | 2 | 3 | 4 | 5 |
| 6 | 7 | 8 | 9 | 10 | 11 | 12 |
| 13 | 14 | 15 | 16 | 17 | 18 | 19 |
| 20 | 21 | 22 | 23 | 24 | 25 | 26 |
| 27 | 28 | 29 | 30 | 31 | | |



2020-2021 TSD Calendar*

Texas School for the Deaf
Learn • Grow • Belong

**The situation surrounding COVID-19 is dynamic and rapidly evolving on a daily basis. This calendar is subject to change as a result.*

July

Return to Work Dates:

13-17..... Principals/Supervisors/Asst Prin./Asst Spvrs.
17..... LSSPs/CM/MH Coor./Curriculum Spcs
20-24..... ILC & Student Life Department Heads
27-31..... Student Life Spvrs/Coordinators/Nurses
NEO (Groups TBA)

August

3-7..... Teachers/Counselors/SLPs/Support Staff/
Athletics/All Student Life Staff (Training)
10-12..... All Remaining Staff Return for Training
13-14..... Teacher Prep Days/Staff Training
17..... 1st Nine Weeks Begins
17-31..... Online Learning
27..... Holiday. School NOT Closed

September

1-3..... Online Learning
4..... Staff Development
7..... Labor Day Holiday/Resid. Students Return

October

12..... Staff Development/Resid. Students Return
19..... 2nd Nine Weeks Begins

November

11..... Holiday. School NOT Closed
23-24..... Staff Development
25-27..... Thanksgiving Break

December

18..... End of Fall Semester
21-Jan. 1..... Winter Break

January

1..... New Year's Day
4..... Teacher Prep Day/Resid. Students Return
5..... 3rd Nine Weeks Begins
18..... MLK, Jr. Holiday/Resid. Students Return

February

15..... Staff Development/Resid. Students Return

March

2..... Holiday. School NOT Closed
11..... Thursday Homegoing
12..... Staff Development
15-19..... Spring Break
22..... 3rd Nine Weeks Begins

April

1..... Thursday Homegoing
2..... Friday Holiday* Opt. Bad Weather Makeup Day
5..... Staff Dev/Resid. Return* Opt. Bad Weather Day
21..... Holiday. School NOT Closed

May

27..... Graduation/Homegoing. Dismiss at noon
28..... Teacher Prep Day
31..... Memorial Day Holiday

Instructional Days (175)

Fall: 82 Spring: 93

Instructional Minutes

Fall: 35,470
Spring: 40,045
Total: 75,515

- Staff Development/Prep Days
- Closed for Students; Open for Staff, Day Off at Discretion of Supervisor
- School Closed, Mandatory Day Off
- R • Residential Students Return on a Monday
- H • Homegoing on Thursday

| January 2021 | | | | | | |
|--------------|----|----|----|----|----|----|
| S | M | T | W | T | F | S |
| | | | | | 1 | 2 |
| 3 | R | {A | 6 | 7 | 8 | 9 |
| 10 | 11 | 12 | 13 | 14 | 15 | 16 |
| 17 | R | 19 | 20 | 21 | 22 | 23 |
| 24 | 31 | 25 | 26 | 27 | 28 | 29 |

| February 2021 | | | | | | |
|---------------|----|----|----|----|----|----|
| S | M | T | W | T | F | S |
| | 1 | 2 | 3 | 4 | 5 | 6 |
| 7 | 8 | 9 | 10 | 11 | 12 | 13 |
| 14 | R | 16 | 17 | 18 | 19 | 20 |
| 21 | 22 | 23 | 24 | 25 | 26 | 27 |
| 28 | | | | | | |

| March 2021 | | | | | | |
|------------|-----|----|----|----|----|----|
| S | M | T | W | T | F | S |
| | 1 | X | 3 | 4 | 5 | 6 |
| 7 | 8 | 9 | 10 | H | 12 | 13 |
| 14 | 15 | 16 | 17 | 18 | 19 | 20 |
| 21 | {22 | 23 | 24 | 25 | 26 | 27 |
| 28 | 29 | 30 | 31 | | | |

| April 2021 | | | | | | |
|------------|----|----|----|----|----|----|
| S | M | T | W | T | F | S |
| | | | | H | 2* | 3 |
| 4 | R* | 6 | 7 | 8 | 9 | 10 |
| 11 | 12 | 13 | 14 | 15 | 16 | 17 |
| 18 | 19 | 20 | X | 22 | 23 | 24 |
| 25 | 26 | 27 | 28 | 29 | 30 | |

| May 2021 | | | | | | |
|----------|----|----|----|----|----|-----|
| S | M | T | W | T | F | S |
| | | | | | | 1 |
| 2 | 3 | 4 | 5 | 6 | 7 | 8 |
| 9 | 10 | 11 | 12 | 13 | 14 | 15 |
| 16 | 17 | 18 | 19 | 20 | 21 | 22 |
| 23 | 30 | 24 | 31 | 25 | 26 | GHZ |
| | | | | | | 28 |

| June 2021 | | | | | | |
|-----------|----|----|----|----|----|----|
| S | M | T | W | T | F | S |
| | | 1 | 2 | 3 | 4 | 5 |
| 6 | 7 | 8 | 9 | 10 | 11 | 12 |
| 13 | 14 | 15 | 16 | 17 | 18 | 19 |
| 20 | 21 | 22 | 23 | 24 | 25 | 26 |
| 27 | 28 | 29 | 30 | | | |

GENERAL INFORMATION

The COVID-19 pandemic presents new challenges to school systems throughout the world. It has forced each of us to alter our traditional ways of conducting school. TSD is committed to providing our students with the best possible learning experience, regardless of whether it occurs on-campus or virtually.

We recognize the additional challenges and concerns the COVID-19 pandemic has created for TSD's residential programs. When we resume in-person instruction, we are also committed to providing safe and healthy learning environments to protect staff and students in dorms and after school settings.

Parents and guardians should have received a link to select their learning preference for virtual (online) or in-person. **This will be the official poll for our planned on-campus opening currently scheduled for September 8.** You must complete this poll to register your student for the school year.

Commitments will continue through each nine-week grading period and will be automatically extended for the upcoming grading period unless parents/caregivers notify the school of their desire to change.

Additionally, changes mandated by health and safety requirements will be communicated to parents/guardians as quickly as possible.

This document provides an overview of campus safety protocols and our virtual learning program in order to assist parents/caregivers in making informed decisions for the instructional delivery model that best meets their child's needs.

We remain committed to the reopening values we have been sharing with you since mid-summer. They include:

- Placing a priority on student and staff safety and well-being
- Focusing on equity, and
- Staying flexible



2020-2021 REOPENING TIMELINE

Monday, August 3 – Friday, August 14

Teachers and designated staff report virtually for professional development and in-service.



Monday, August 17, 2020

First day of school

Virtual learning only for all students for first three weeks, which runs through Monday, September 7, 2020



Tuesday, September 8, 2020

In-person learning becomes available (dependent upon improved local conditions and guidance from public health officials)



Friday, December 18, 2020

Last day of first semester



Monday, January 5, 2021

First day of second semester



Thursday, May 27, 2021

Last day of school for students



Friday, May 28, 2021

Last day of school for teachers

SCHOOL SAFETY MEASURES

As a district, the following principles governed TSD's safety planning:

- Prioritize student and staff health, safety and well-being as a top priority.
- Ensure hygiene and health-related practices are CDC approved, clearly communicated, effectively implemented and diligently enforced.
- Promote practices and protocols to reduce risk of virus transmission and support our capacity to be responsive and agile when facing changing health circumstances.

TSD's reopening task force came together to lead and outline this important work. The following shared understandings were used to frame this section of the guide:

- Focus on variables we can control.
- Use reliable, scientific sources to guide an understanding of the virus and how to most effectively prevent exposure among our community.
- Seek ways to reduce risk of virus (COVID-19) transmission.

- Identify external and internal entities that lead us to tighten or loosen restrictions.
- Ensure new practices, policies and regulations are flexible and can be implemented and maintained.

This guide will continue to be refined through dedication and commitment to opening the doors to a safe campus in August.

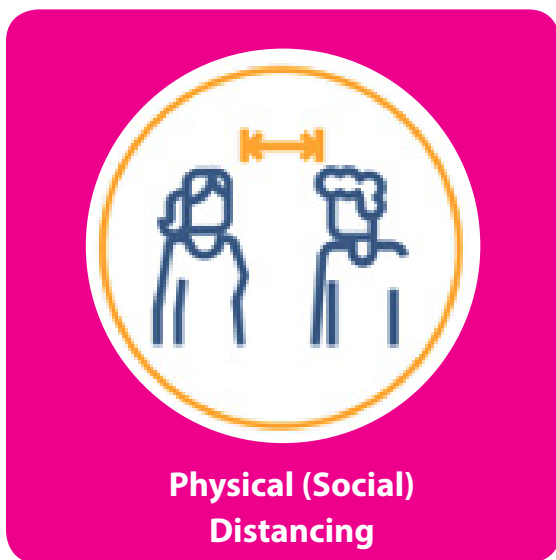
SAFETY GUIDELINES AT A GLANCE

- **Social Distancing** – All hallways and classrooms will be marked off to encourage students to keep six feet away from others whenever possible to reduce the chance of infection/spread of the virus.
- **Personal Protective Equipment** – Masks, hand sanitizer, soap and water will be provided for all students.
- **Masks** – All students, age 3 and up, and all staff are required to wear face masks that cover the mouth and nose.
- **Hand washing** – Students are encouraged to regularly wash their hands with soap and water for at least 20 seconds. The school day will include time built in for regular hand washings.
- **Outdoor hand washing stations** will be added to high traffic entries.
- All classrooms will be equipped with **hand sanitizer** and posters reminding students to **wash their hands** and use sanitizer.
- Teachers and staff will help students to be aware of the symptoms of COVID-19 and encourage them to **stay home if they feel sick**.
- Parents are urged to keep students at home if they feel ill, have a fever, problems breathing or chest pain.
- Parents are encouraged to **talk with your children about COVID-19** and reinforce basic safety measures.
- **Plexiglas dividers** have been ordered and will be installed in classrooms, lunch/snack areas, and cafeteria.
- **Water fountains** across campus are turned off.
- **Water bottle** filling stations installed or water supply provided. We suggest students bring their own water bottle.
- Classrooms will be **sanitized daily** and deep cleaned weekly.
- **Air quality** assessments done throughout campus HVAC system.
- **Training all staff members** for 100% participation of sanitation and cleaning of high touch surfaces and other areas.
- **Hospital-grade disinfectant** used to continuously clean high touch areas, and hospital-grade products to routinely fog classrooms and other areas.
- **Mandatory student training and practice on safety protocols** in, and away, from school.
- **Isolation rooms** designated and isolation protocols for symptomatic students or staff in place.



APPROACH TO SAFETY

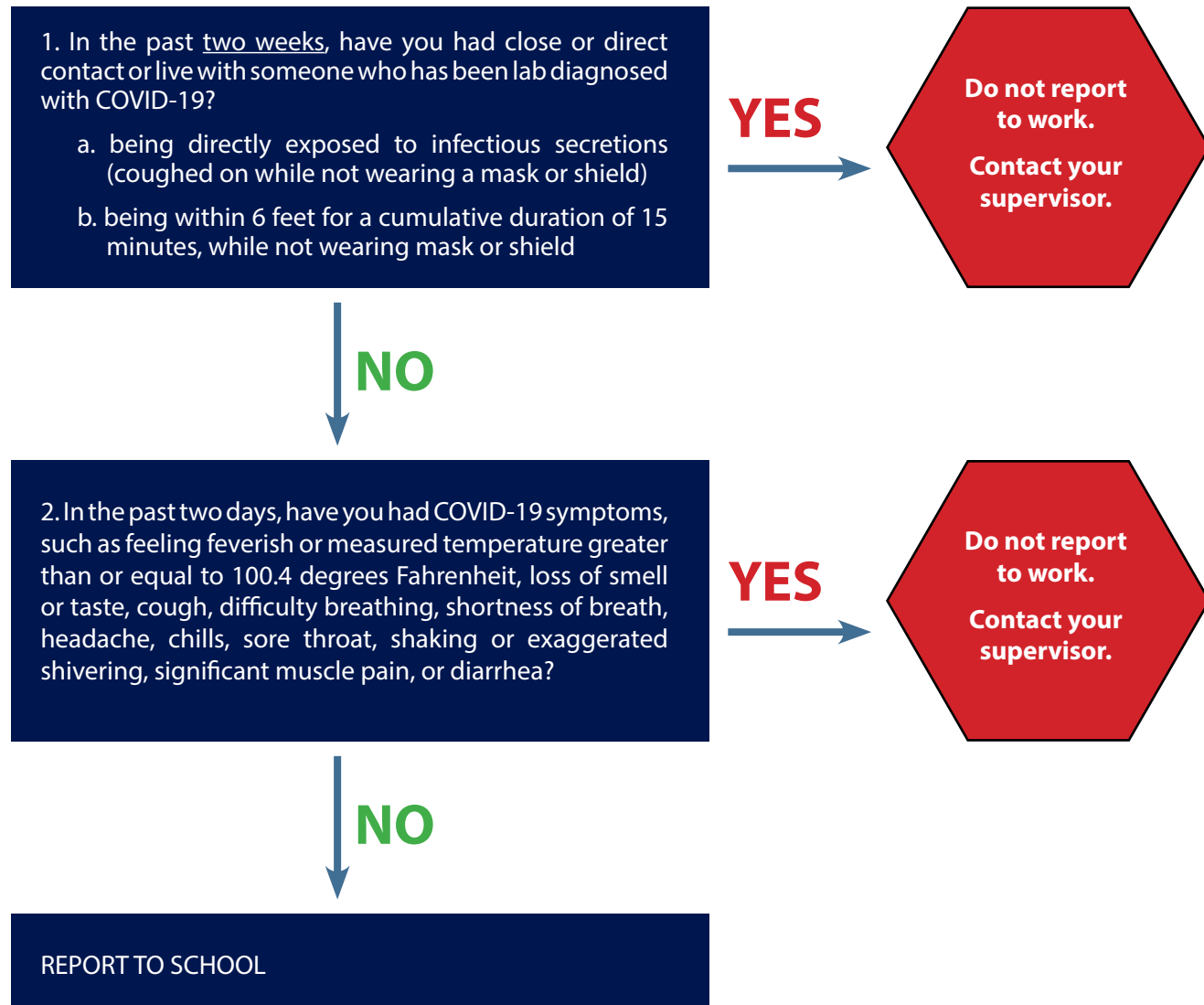
TSD's approach to safety includes: Cleaning, Sanitizing and Disinfecting; Health Screening and Preventative Hygiene; Physical (Social) Distancing; and Communication, Training and Coordination.



Incorporating these approaches into the typical school day for all students will be critical to establishing our “new normal,” and to continue to allow school to be a special place for students to come and experience the joys of learning. Each section below details the school’s efforts in each of these four critical areas during this COVID-19 pandemic.

TSD SAFETY PROTOCOLS

Teachers, staff and visitors will self-screen for COVID-19 symptoms prior to arriving on campus each day. The self-screening will include taking their own temperature and answering the following questions:



TSD SAFETY RESPONSES

Based on the guidelines and recommendations of the Centers for Disease Control and Prevention (CDC), Texas Education Agency (TEA), and orders from Texas Governor, Greg Abbott, below are the following actions TSD is taking in response to the official recommendations of these authorities.

| RECOMMENDING AGENCY | | TSD RESPONSE |
|--|---|---|
| Centers for Disease Control, Texas Education Agency and the Governor's Executive Order recommend wearing face coverings. | → | TSD will make Personal Protective Equipment (PPE) available to all students and staff members. |
| Centers for Disease Control and the Texas Education Agency recommend frequent hand washing or hand sanitizing. | → | <p>Each classroom will be provided a poster to display detailing proper steps for hand washing, and teachers will review these steps with students. Portable hand sanitizing stations will be located outside classrooms, and hand sanitizer for use by students will be provided to all teachers.</p> <p>Students can also access cleaning stations positioned across the campus. School restrooms will be stocked with soap and paper towels.</p> |
| Centers for Disease Control recommends physical distancing, as possible. TEA and TAPPS recommendations cover activities such as athletics or other extracurricular activities. | → | Graphic markers will be placed on sidewalks, hallways, inside gyms and classrooms to remind students, staff and visitors to maintain six feet of physical distance from others. At times when physical distancing is not possible - such as emergency drills, secondary passing periods, and on school buses - students will wear face masks. |
| Centers for Disease Control and Texas Education Agency recommend extra cleaning and disinfecting. | → | Texas Facilities Commission staff will be responsible for daily disinfecting classrooms, offices, dorm common areas, cafeteria, gyms, etc. All TSD staff will be issued disinfectant wipes and hospital grade spray disinfectant for use on items that need more frequent cleaning such as touched items like door handles and door knobs and technology equipment. |

TSD SAFETY RESPONSES

RECOMMENDING AGENCY

TSD RESPONSE

Centers for Disease Control, Texas Education Agency and the Governor's Executive Order recommend a reduction in the sharing of supplies.



Each department will limit shared supplies and disinfectant material through the day/night.

Centers for Disease Control and the Texas Education Agency recommend physical distancing. TEA provided additional information for instances when students are frequently within 6 feet of each other.



TSD is installing Plexiglass dividers in classrooms, office areas, cafeteria and areas where students congregate. This will add additional protection for students wearing masks or face shields when physical distancing is not possible. In addition, when physical distancing is not possible, but students are wearing face masks or shields, more frequent hand washing or hand sanitizing is recommended. TSD will provide hand sanitizing stations within and near all classrooms.

Texas Education Agency recommends increased air flow, when possible, in situations where students are less than six feet apart.



TFC has made some adjustments in our air flow circulation. In addition, staff may open windows when practical to allow improved air flow, while also maintaining a comfortable temperature within the building.

Center for Disease Control, Texas Education Agency and the Governor's Executive Order recommend reducing large group gatherings.



Designated entrances and exits to each building at TSD will be assigned for various student groups. Extracurricular activities or approved after-school activities will follow the same safety guidelines as the regular school day. TAPPS activities will follow TAPPS guidelines. Large student assemblies or events will not be permitted at this time. Cafeteria tables will be fitted with Plexiglass dividers to separate and shield students.

Texas Education Agency recommends covering coughs or sneezes with a tissue or elbows.



Each building will receive a variety of safety reminder posters and campus staff will reinforce the message.

Centers for Disease Control, Texas Education Agency and Governor's Executive Order recommend holding certain activities outdoors if possible.



Activities such as PE and recess will occur in outdoor spaces, weather permitting. PE and recess will follow social distancing regulations when inside.

TSD SAFETY RESPONSES

RECOMMENDING AGENCY

Texas Education Agency recommends certain bus transportation protocols.

Texas Education Agency recommends local school systems restrict visits to campuses to only those essential to school operations.

Texas Education Agency requires districts to inform students of COVID-19 symptoms and safety procedures.

TSD RESPONSE

Upon entering a bus, all students will have their temperature checked, be required to wear a mask and sanitize their hands. Bus windows will be opened between routes to increase airflow. Buses will be sanitized after each route, to include high touch areas.

Each department will develop systems for curbside pick-up and drop-off of all students and materials. Meetings, such as ARDs and other meetings, will be conducted virtually.

If a parent must come into school, an appointment is required, as is following all safety procedures, such as wearing a mask and sanitizing hands.

Essential operations are defined as those providing direct student services.

A set of training videos on safety and hygiene will be mandatory viewing for all staff.

SOCIAL DISTANCING PRACTICES



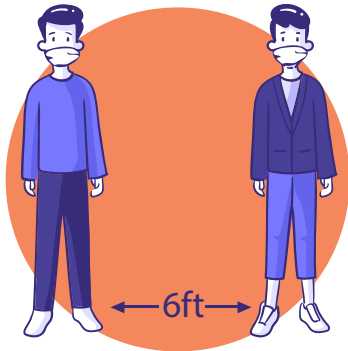
CAMPUS VISITORS

To minimize the risk of exposure, TSD is temporarily suspending all campus visitors with the exception of those essential to school operations:

- Contractors
- Emergency personnel
- Mail and Postal Delivery services
- Others determined by campus administrators

All campus visitors are required to wear face coverings and will be subject to respond to TSD visitor health screening questions before allowed entry to campus.

Parents/Guardians who must come to campus to pick up a student are limited to either remaining outside and utilizing email or texting or the intercom system, if this option is available, one parent/guardian may come into the front office area to sign-out their child. Parents/Guardians must wear a face covering at all times while in the front office. Parents/Guardians may be asked to wait outside the front entrance for their student.



PHYSICAL DISTANCING

Students and staff are encouraged to maintain **six feet of social distance** at all times. Reminder posters, floor markings, plexiglass shields, designated hallway traffic patterns, and entry and exit doors will promote proper social distancing. The number of students attending in-person classes will determine class size. Desks and tables will be socially distanced as much as possible, and partitions will be used on a limited basis.

CLASSROOMS

In order to keep students and staff safe, classrooms will look different. Classrooms are to be decluttered by removing anything not needed for instruction to minimize the number of contact surface spaces, reduce occurrences of cleaning protocols and allow for appropriate spacing.

When possible, spaces should be designated for individual belongings.

If any tables are used, plexiglass will divide student spaces when possible. Efforts will be made to reduce the number of items going back and forth between home and school.

Students will not share items. Floor markings will be placed to identify where students will line up. A clear and separate space will be designated for used materials, and teachers and custodians will wipe down all used items with sanitizer at the end of each school day. Sanitizer is provided in each classroom for student use, and schedules will have time built in for students to wash hands.

HALLWAYS

Hallway traffic flow in each department will be directionally designated, either so all students walk in the same direction while maintaining social distancing as marked on floors, or two-directional marked hallways marked to ensure students maintain the appropriate six feet away from others passing and those in front of and behind them. Hallway traffic will be single-file and utilize hand sanitizer or hand washing stations as often as available.

RESTROOMS

Restrooms will be marked so sinks utilized are of proper distance. Everyone must wear their face covering while in the restroom. Students will wait their turn outside in the hallway, utilizing the floor markings for spacing. Everyone will wash their hands thoroughly, with soap and water, for 20 seconds. Students must return straight to their classroom and utilize hand sanitizer upon entering the classroom each time. Reminder posters will be posted across the campus.

PHYSICAL ACTIVITIES

Because of the likely reduced risk of virus spread when outdoors, when feasible and appropriate, it is preferable for students to gather outside, instead of inside. When impractical for students to wear face coverings while participating in physical activities, everyone must wear a face covering at all times when moving to/from a new space, and when not participating in the activity. When exercising, students may remove their face covering as long as they maintain six feet of distance from others. Mask storage procedures will be developed by departments to ensure masks stay clean and separate when not in use. Staff members must wear face coverings while moving students to their appropriate six feet distance apart.

Students will not be required to dress out for physical education classes.



PLAYGROUNDS

Physical activities providing for proper social distancing are encouraged. The use of playground equipment will be limited, based on the need for continuous cleaning of equipment and space. Students will be made

aware of the importance of maintaining social space while in outdoor spaces. Classes will not intermingle students, and student groups must maintain a distance of 75 feet from other groups of students.

FOOD SERVICES

- Staggered mealtimes will be utilized to accommodate the number of students entering the area to abide by social distancing guidelines.
- Cafeteria, classrooms, and outdoor areas may all be utilized in order to provide for spatial distancing during meal times.
- Physical barriers will be utilized in the cafeteria as needed for safety reasons.
- Face coverings may be removed only when actively eating.
- Some students may eat meals in the classroom.
- Elementary students may receive to-go meals delivered to their school department.
- Floor markings will designate where students will stand while in line to pick up their lunch.
- Food service staff will have temperatures verified each day and will wear face coverings and gloves during food preparation and service.
- Plexiglass shields will be installed in the cafeteria.

TRANSPORTATION



DAY STUDENT TRANSPORTATION

- All drivers will follow the staff screening requirements.
- Drivers must wear appropriate PPE, including face masks, while driving.
- Physical distancing will be implemented on all routes.
- Additional routes resulting in staggered start times may be necessary to accomplish distancing protocols.
- Buses will undergo daily cleaning and sanitization at the conclusion of each route, and will also undergo a weekly deep cleaning.
- All buses will be equipped with PPE, disinfectant, towels and first aid supplies.
- Students will wear masks at all times while on the bus.
- Assigned staff will supervise student arrival and dismissal, conduct pre-screenings, perform non-contact temperature checks, ensure all students are appropriately wearing masks, and direct students to waiting areas.
- Staff will ensure social distancing during arrival and dismissal.
- During dismissal times, teachers will supervise designated pre-loading areas where students will wait for the bus to arrive.

HOMEGOING TRANSPORTATION

See **RESIDENTIAL**

PERSONAL PREVENTATIVE PRACTICES

TSD will use TEA Public Health Guidance and the CDC Considerations for Schools to protect the safety of our students and staff.

People with COVID-19 have reported a wide range of symptoms, ranging from mild to severe illness. Symptoms may appear 2-14 days after exposure to the virus. Anyone with these symptoms may have COVID-19:

- Fever or chills
- Cough
- Shortness of breath or difficulty breathing
- Fatigue
- Muscle or body aches
- Headache
- New loss of taste or smell
- Sore throat
- Congestion or runny nose
- Nausea or vomiting
- Diarrhea

SCREENING FOR COVID-19 SYMPTOMS - STAFF

- All TSD staff will be required to complete an online self-screening for COVID-19 symptoms, prior to reporting to work each day.
- Teachers and staff must report to TSD Human Resources if they themselves have COVID-19 symptoms, or are lab confirmed with COVID-19, and must remain off-campus until re-entry criteria is met.
- Additionally, teachers and staff must send notification to TSD Human Resources if they have had close contact with an individual who is lab confirmed with COVID-19 and, must remain off campus until the 14-day incubation period has passed.

STAFF REQUEST FOR ACCOMMODATIONS

- Request for accommodations should be submitted to the Human Resources Director using the following form: <https://forms.gle/ZCzTMNL73wmJdJ3v7>

SCREENING FOR COVID-19 SYMPTOMS – STUDENTS

- Parents/guardians must ensure they do not send a child to school on campus if the child is experiencing COVID-19 symptoms or is lab confirmed with COVID-19. Instead, parent/guardians should opt to receive remote instruction until re-entry conditions are met.
- Teachers will monitor and refer students to the Health Center if symptoms are suspected to be present.



STUDENTS OR STAFF DISPLAYING COVID-19 SYMPTOMS

- Students who report feeling ill will be immediately assessed, including a temperature check, to determine if they are symptomatic for COVID-19.
- Any student who is determined by the nurse to have COVID-19 symptoms while at TSD will be immediately placed in a supervised isolation room until the student can be picked up by a parent or guardian.
- Other students who may have been in contact, will be immediately removed from the areas used by the symptomatic individual and taken to an alternate location on campus so that the classrooms/ areas can be disinfected.
- Staff members displaying COVID-19 symptoms will follow proper school protocols, including isolation from students and other staff members.

STUDENTS OR STAFF CONFIRMED OR SUSPECTED WITH COVID-19

Any individuals who themselves either: (a) are lab confirmed to have COVID-19, or (b) experience the symptoms of COVID-19, are required to stay at home throughout the infection period, and cannot return to campus until all of the following conditions are met:

1. At least three days (72 hours) have passed since experiencing fever without the use of fever-reducing medications.
2. The individual has shown improvement in symptoms (e.g., cough, shortness of breath).
3. At least ten days have passed since symptoms first appeared.

If the individual has symptoms that could be COVID-19 and wants to return to school before completing the above stay-at-home period, the individual must either:

- a) Obtain a medical professional's note clearing the individual for return based on an alternative diagnosis.
- b) Receive two separate confirmations, at least 24 hours apart, confirming the individual is free of COVID-19 via acute infection tests at an approved COVID-19 testing location found at <https://tdem.texas.gov/covid-19/>.

Staff who test positive for COVID-19 are required to stay home until approved to return to work by TSD Human Resources.

Students or staff who come into close contact with an individual who is lab confirmed to have COVID-19 will be required to self-quarantine for 14 days, and may not return to campus during that time.

Per public health guidance published by TEA, close contact is defined as either:

1. Being directly exposed to infectious secretions (e.g., being coughed on while not wearing a mask or face shield).
2. Being within 6 feet for a cumulative duration of 15 minutes, while not wearing a mask or face shield.
3. If either above occurred at any time in the last 14 days, while at the same time an infected individual was infectious.

Consistent with school notification requirements for other communicable diseases, and consistent with legal confidentiality requirements, TSD will notify all teachers, staff, and families of all students in a school if a lab confirmed COVID-19 case is identified among students, teachers or staff who participate in any on-campus activities.

MITIGATING SPREAD



CLEANING AND SANITATION

TSD facilities will be thoroughly cleaned and disinfected each day. Commonly touched surfaces, such as doorknobs and railings, will be disinfected frequently throughout the day. Disinfectant wipes will be provided to staff to sanitize working surfaces and shared objects after each use, and hand sanitizer will be available within classrooms and throughout the campus.

Teachers will wipe down any additional surface spaces that have been used during the class period, including their own technology and door handles.

After all students have left the classroom, teachers will do a thorough wipe down of the following:

- Teacher technology equipment
- Surface spaces that have been used during the day
- Door handles
- Pencil sharpener
- Items in the "used" box
- Personal desk

In addition, Texas Facilities Commission (TFC) custodial services will do a thorough daily cleaning of every classroom and dorm room.



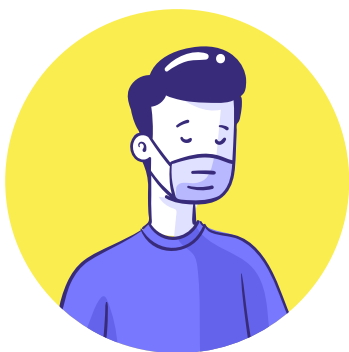
HAND SANITIZER

To reduce the chance of spreading germs, staff and students will be instructed to either wash hands or use hand sanitizer when moving between spaces within the campus. Processes include but are not limited to:

- Utilizing hand sanitizers in the hallways upon entering a building.
- After placing personal items in designated areas, students will utilize hand sanitizer in the classroom prior to taking their seat, or teachers may escort their first period class to hand washing stations prior to the beginning of instruction.
- Students will wash hands thoroughly with soap and water for 20 seconds after using the restroom.

- Since students will need to touch door handles, students will use hand sanitizer inside the classroom once returning from the restroom.
- Prior to leaving the classroom, teachers will oversee to ensure each student uses hand sanitizer upon exiting the classroom.
- Students will utilize hand sanitizing stations set up by the cafeteria before picking up their lunch.
- After throwing away lunch trash, students will utilize hand sanitizer in the classroom.
- Before leaving any building, students will use hand sanitizer provided in the hallways before they get into cars, buses, walk, or ride their bike to go home.

TSD will provide students with lessons on proper hand washing techniques and encourage students to utilize hand washing stations or hand sanitizer every time they change physical spaces within the campus, including PE, recess and all outdoor activities.



FACE COVERING

TSD will comply with Texas Governor, Greg Abbott's executive orders regarding the wearing of masks. (Currently, Executive Order GA-29) In addition to executive orders, TSD will require the use of masks for all students over the age of three. Students and staff are expected to wear face coverings during school hours.

Face coverings include non-medical grade disposable face masks, cloth face coverings (over the nose and mouth), or full-face shields to protect eyes, nose, and mouth.

TSD has a supply of clear masks and additional other masks that will be available, though TSD encourages students to bring a preferred mask that your child likes and is comfortable for them. Have your child practice wearing a mask for more extended periods.

Students should wear masks before boarding both charter and day student buses.

These requirements are subject to change:

- Students, Pre-K through 2nd grade, will wear face coverings in the hallways, common areas and during arrival and dismissal.
- Students in grades 3-12 and ACCESS will wear face coverings while on campus.
- Face coverings should not be placed on young children under age two, anyone who has trouble breathing, or is unconscious, incapacitated, or otherwise unable to remove the mask without assistance.
- Students will not be required to wear face coverings while eating, but will be distanced six feet apart.
- It may be impractical for students to wear face coverings while participating in some athletic or other extracurricular activities.
- Mask storage procedures will be developed by departments to ensure masks stay clean and separate when not in use.

- Individual needs regarding additional PPE will be addressed on a case-by-case basis. Requests for accommodations should be submitted to the appropriate Division Director and the Director of Health Services.

ON-CAMPUS LEARNING

In-person learning will be available to all students in all grades beginning on September 8, (September 7 for residential students). Currently TSD's plan is to follow a modified Monday through Friday schedule, including weekly homegoing.

TSD is implementing significant pro-active measures to help safeguard the health and safety of our students and staff. Our health and safety measures will follow TEA Public

Health Guidance: <https://tea.texas.gov/sites/default/files/covid/SY-20-21-Public-Health-Guidance.pdf>.



TEACHING AND LEARNING

TSD's learning environments will continue to evolve as the pandemic changes. Students who return to in-person learning on September 8, may later move into virtual environments if COVID-19 outbreaks occur and/or government mandates close our buildings for periods of time.

CURRICULUM

TSD will continue to implement your student's IEP in accordance with the Texas Essential Knowledge and Skills (TEKS) standards. Related and support services will continue.

SCHOOLGY® LEARNING MANAGEMENT SYSTEM (LMS)

TSD recently purchased Schoology LMS to assist us in teaching curriculum and instruction. The purpose of the LMS is to bring administrators together within one communication platform. Teachers create content, design lessons, and assess student understanding, all within the platform. Encouraging collaboration, discussion and creativity, students engage in interactive online classroom communities.

Parents/guardians/caregivers have just one place to access all of your child's accounts with one log in. Additional information, training and support for Schoology, including how to access your child's Schoology account, will be provided once school opens.



INSTRUCTION

Students participating in on-campus instruction will utilize technology devices to access lessons, instructional materials and activities, and assessments. Devices will also be used for real-time communication and collaboration between teacher and students, including students who are learning at home. TSD is working hard to contain the number of places students will travel to on a daily basis. When possible, students will remain in the same classroom or work space to the maximum extent possible.

INSTRUCTIONAL MODELS

VIRTUAL LEARNING

All instructional programs will be virtual, from August 17 through September 7. While we believe in-person learning provides the best experience for most students, we know that we must be flexible during this time. Virtual learning, unlike last spring, will be facilitated by TSD teachers who will be present on-screen Monday through Friday during regular school hours. Each day, students will have periods of daily, live instruction with teachers, as well as periods of self-paced independent learning. Students will log in daily to access their assignments, instructional resources and assessments.

Each school department will follow a daily schedule.

Beginning September 8, students will transition to their chosen learning platform: 100% Virtual or 100% In-person.

The **100% in-person instruction** platform will have students attend daily from 7:55 a.m. to 2:30 p.m. From 2:30 to 3:20 p.m., teachers will provide support to assess learning gaps, provide accelerated instruction as well as provide additional instruction as needed from ARD committee recommendations. From 8:00 a.m. to 2:30 p.m., students remain on campus for 450 minutes during the school day. Attendance will be taken and recorded daily.

Our **100% virtual learning** will be synchronous and asynchronous.

Synchronously, students will follow a daily schedule that mirrors the in-person schedule following a Friday schedule for the first quarter, from 8:00 a.m. to 2:30 p.m. TSD strives to maintain individual instruction or activities to support the IEP and asynchronously, we are able to respond to that need.

Virtual attendance requirements are 180 minutes for ECE through 5th grade students; 240 minutes for Middle School, High School/Career Technical Education, and ACCESS students. Attendance will be taken and recorded daily.

Asynchronous Embedded Approach

Considering the individual needs of each TSD student and recognizing their varying aptitudes, teachers are aware that asynchronous embedded learning activities are beneficial. This is from focused re-teaching, new concept instruction, to focused practices.

Students in the ECE and Elementary programs benefit from small group instruction and a variety of activities. Combining asynchronous and synchronous schedules offers students a way to connect with each other, and be introduced to new information, virtually. Students also respond well to asynchronous learning, where they can participate in structured small group activities in a variety of ways. For middle school students, teachers from each content area will be produce videos/ materials for specific lessons and post them online through Schoology. Opportunities for students to meet face-to-face with teachers for support will be scheduled as needed. For students in high school and Career and Technical Education (CTE) courses, a combination of real-time conferencing and self-paced assignment completion is required. High school and CTE students benefit from a structured schedule with a clear picture of when they are expected to show up for their class, while at the same time, working independently on assignments and their project-based learning at their own pace.

For older students, the asynchronous model requires students to commit to self-guidance through lesson modules and completion of required assignments in a timely manner. If at any time a student demonstrates difficulties in committing to the asynchronous schedule and activities, students and parents/guardians may be contacted.

SYNCHRONOUS



- Students attend class virtually
- Two-way communication
- Real-time engagement
- Attendance taken during class time

ASYNCHRONOUS



- Students don't engage at the same time
- Recorded videos
- Students responsible for assigned work
- Attendance taken every day

Instructional Programs: In-Person and Virtual Synchronous Schedules

Parent Infant Program

WEEK 1(Aug. 3 - 7 **LWOP for all Teacher Aides / 40 hours**

| WEEK 2 | | | | | | |
|------------------|----------------------------------|-------------------------------|-------------------------------|-------------------------------|-------------------------------|----|
| AUGUST | 10 | 11 | 12 | 13 | 14 | |
| 7:30 - 8:30 | Community building | Community building | Community Building | Community Building | Community Building | |
| 8:30 - 9:30 | Claire's welcome back | SEL/BLM | SEL/BLM | SEL/BLM | Virtual Open House | |
| 9:30 - 10:30 | Claire's welcome back | Mandatory training | Mandatory training | Mandatory training | Virtual Open House | |
| 10:30 - 11:30 | PIP plan for the week | Schoolology | Schoolology | Schoolology | Schoolology | |
| 11:30 - 12:30 | lunch | lunch | lunch | lunch | lunch | |
| | Teacher / TA planning | | | | | |
| | 1:1 with their primary teacher | 12:30 - 1:30 | <i>TAs on campus:</i> | <i>TAs on campus:</i> | | |
| | for kit planning, expectations, | PIP/ECE ELC monthly planning | <i>making PIP family kits</i> | <i>making PIP family kits</i> | | |
| Afternoon Block | etc. | meeting | <i>making week 1 ind kit</i> | <i>making week 1 ind kit</i> | Delivering kits to families | |
| | RB meets TAs on campus to | 1:30 - 2:30 | <i>Scanning books</i> | <i>Scanning books</i> | | |
| Afternoon Block | distribute laptops, phones, keys | TA Mileage training | Making ASL videos | Making ASL videos | | |
| 2:30 - 3:00 | Daily wrap up | Daily wrap up | Daily wrap up | Daily wrap up | Daily wrap up | |
| 3:00 - 4:00 | Returning Tas training new TA | Returning Tas training new TA | Returning Tas training new TA | Returning Tas training new TA | Returning Tas training new TA | |
| Daily Est. Hours | 8 | 8 | 8 | 8 | 8 | 8 |
| TOTAL HOURS | | | | | | 40 |

| VIRTUAL LEARNING - August 17 - September 4 **Note: Aug 27 Observed Holiday** | | | | | | |
|--|--------------------------------|--------------------------------|--------------------------------|--------------------------------|--------------------------------|----|
| 7:30 - 8:00 | email / daily check in | email / daily check in | email / daily check in | email / daily check in | email / daily check in | |
| | Joining teachers on their zoom | Joining teachers on their zoom | Joining teachers on their zoom | Joining teachers on their zoom | Joining teachers on their zoom | |
| | classes and 1:1 meetings with | classes and 1:1 meetings with | classes and 1:1 meetings with | classes and 1:1 meetings with | classes and 1:1 meetings with | |
| 8:00 - 12:00 | students | students | students | students | students | |
| 12:00 - 12:30 | Lunch break | Lunch break | Lunch break | Lunch break | Lunch break | |
| 12:30 - 1:00 | daily debriefing | PIP team meeting | daily debriefing | daily debriefing | daily debriefing | |
| 1:00 - 2:00 | Planning with teacher | PIP team meeting | Planning with teacher | Planning with teacher | Kit distribution | |
| | | PIP team meeting, Making | | | | |
| 2:00 - 4:00 | Making materials / kits | materials / kits | Making materials / kits | Making materials / kits | Kit distribution | |
| Daily Est. Hours | 8 | 8 | 8 | 8 | 8 | 8 |
| TOTAL HOURS | | | | | | 40 |

| FALL SEMESTER - HYBRID LEARNING - September 7 - TBD **NOTE: Sept 7 Observed Holiday** | | | | | | |
|---|----------------------------------|---------------------------------|---------------------------------|---------------------------------|---------------------------------|----|
| 7:30 - 8:00 | email / daily check in | email / daily check in | email / daily check in | email / daily check in | email / daily check in | |
| | (1) TA joining teachers on their | Joining teachers on their zoom | Joining teachers on their zoom | Joining teachers on their zoom | Joining teachers on their zoom | |
| | zoom classes and 1:1 meetings | classes and 1:1 meetings with | classes and 1:1 meetings with | classes and 1:1 meetings with | classes and 1:1 meetings with | |
| 8:00 - 12:00 | with students | students | students | students | students | |
| | (2) TAs joining teachers on In- | (2) TAs joining teachers on In- | (2) TAs joining teachers on In- | (2) TAs joining teachers on In- | (2) TAs joining teachers on In- | |
| 8:00 - 12:00 | person classes with 9 PIP | person classes with 9 PIP | person classes with 9 PIP | person classes with 9 PIP | person classes with 9 PIP | |
| | students | students | students | students | students | |
| 12:00 - 12:30 | Lunch break | Lunch break | Lunch break | Lunch break | Lunch break | |
| 12:30 - 1:00 | daily debriefing | PIP team meeting | daily debriefing | daily debriefing | daily debriefing | |
| 1:00 - 2:00 | Planning with teacher | PIP team meeting | Planning with teacher | Planning with teacher | COVID Cleaning | |
| | | PIP team meeting, Making | | | | |
| 2:00 - 4:00 | Making materials / kits | materials / kits, Making | Making materials / kits | Making materials / kits | Kit distribution | |
| | COVID Cleaning | COVID Cleaning | COVID Cleaning | COVID Cleaning | | |
| Daily Est. Hours | 8 | 8 | 8 | 8 | 8 | 8 |
| TOTAL HOURS | | | | | | 40 |

Instructional Programs: In-Person and Virtual Synchronous Schedules

ECE Preschool and Prekindergarten Elementary, Grades K-5

| Type | ECE | K-2 | 3-5 |
|-----------|--|--|--|
| In-Person | 7:55 - 12:00 Monday-Thursday | 7:55-2:30 Various Grade-Specific Schedules | 7:55-2:30 Various Grade-Specific Schedules |
| Virtual | Virtual Home Visits on Fridays and Check Ins During the Week | Asynchronous Schedule | Asynchronous Schedule |

Middle School Grades 6-8

| Block | Start Time | End Time |
|----------|------------|----------|
| 1 | 7:55 | 8:55 |
| 2 | 9:00 | 10:00 |
| 3 | 10:05 | 11:05 |
| Advisory | 11:10 | 11:35 |
| Lunch | 11:40 | 12:10 |
| 4 | 12:15 | 1:15 |
| 5 | 1:20 | 2:20 |

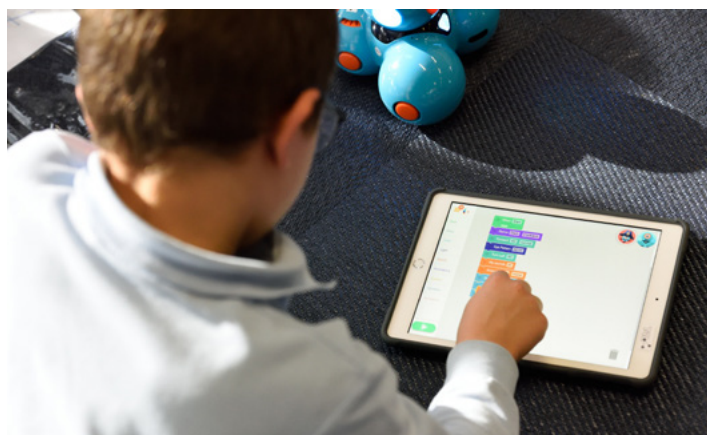
Instructional Programs: In-Person and Virtual Synchronous Schedules

High School Grades 9-12

| Block | Start Time | End Time |
|----------------|------------|----------|
| 1 | 7:55 | 8:55 |
| 2 | 9:00 | 10:00 |
| 3 | 10:05 | 11:05 |
| 4 | 11:10 | 12:10 |
| Lunch/Advisory | 12:15 | 12:45 |
| Advisory/Lunch | 12:45 | 1:15 |
| 5 | 1:20 | 2:20 |

ACCESS Program, 18+

| Fall Schedule | |
|---------------|-------------------|
| 7:55-8:25 | Personal Success |
| 9:8:35-9:45 | Class 1 and 3 |
| 9:55-11:05 | Class 2 and 4 |
| 11:05-1:00 | Lunch & Schoology |
| 1:00-2:30 | Transition Block |



SPECIALTY SCHOOLS AND PROGRAMMING

TSD Career and Technical Education (CTE) courses will adopt a modified schedule to comply with all federal and state level guidance in following seat time minutes associated with specific courses. For students who choose the 100% virtual learning platform, with CTE courses which require student attendance, this will be addressed by the CTE teachers under the supervision of the CTE Administrative team via Schoology on a daily basis through the combination of asynchronous and synchronous learning approaches to ensure students can safely achieve CTE course expectations.

Until it is safe to use the TSD library spaces again, librarians will shift to support all students learning through both platforms. With the online library platform, Destiny®, **TSD Libraries** will maintain support for students, both in-person and virtual learning platforms. Destiny ensures easy access for students to needed programs for their school work and projects. Mobile book carts are available on-campus for students learning in-person, and e-books are available for those learning virtually.

Physical Education (PE) will be conducted in smaller class sizes on-campus for those students in-person. PE classes will be held outside whenever feasible. PE teachers will adhere to all safety protocols to ensure students remain physically distanced a minimum six feet apart and properly using face masks as required. PE equipment will be disinfected and wiped down after each class. Visual markers will be in place to remind and reinforce social distancing expectations. The use of locker rooms will be restricted until they are safe to utilize. Students should avoid touching their faces, especially while playing games or sports. Hand sanitizing and hand washing stations will be provided.

TSD Visual Arts and Performing Arts (Theatre) After School Program will be provided maintaining social distancing practices for students who choose in-person learning. Any shared equipment will be disinfected and wiped down after each use.

RESIDENTIAL PROGRAMS

Residential students will be assigned to smaller groups. Each group will have a different schedule of activities and rotate using common areas, such as living rooms, kitchens, bathrooms, and other places on campus. Subject to student numbers and availability, whenever possible, we will assign one student to their own dorm room. Our Student Life schedule has been developed to minimize student interactions during and after school hours.

Students will be expected to wear masks at all times as required. Students may remove their mask when they are in their assigned small groups, in their own bedrooms, and when they participate in any outdoor activities, as long as they follow protocols for social distancing.

Student Life has built time into the schedule for students to wash their hands. Students will clean their areas after every use, and maintain a proper six feet distance when using the living rooms and any other common areas. Door handles, tables, chairs, light switches, and other frequently touched surfaces in the dorm will be disinfected multiple times throughout the day. Students are expected to shower daily.

Students will undergo temperature checks and a symptoms screening after school before entering the dorm.

Students will not be allowed off-campus until further notice. All outside food orders are not permitted until further notice, as well.

All water fountains in student residences are restricted. Water bottle filling stations installed on campus are available.

We encourage your child to bring their own reusable water bottles or you can purchase one of these Ranger bottles from Student Life for \$15.00. Contact Magdalena McKinney 512-462-5601.



WEEKLY HOMEGOING

TSD has scheduled additional charter buses allowing us to implement the CDC's guidelines to maintain a safe six feet distance during travel. The number of seats per bus will be limited, and students will be assigned to specific seats. Students are required to wear masks at all times on the buses. Please check TSD homegoing transportation page on the TSD website for schedule online.

https://www.tsd.state.tx.us/apps/pages/homegoing_transportation

All residential students will be screened for COVID-19 symptoms, including temperature checks, before boarding buses. TSD chaperones will oversee to ensure that every student uses hand sanitizer and wears their masks.

To minimize interactions when dropping off and picking up suitcases every Friday/Sunday, we encourage students to **bring an extra suitcase on their first day**. One to unpack into upon arrival at TSD and leave suitcase in their dorm room, and a separate small bag or backpack used only to pack for travel to/from home. Washers and dryers are available in all dorms for students use. Students may bring their backpack, water bottle, and snacks.

VIRTUAL LEARNING SUPPORT IN THE DORMS

FIRST THREE WEEKS

Let's ZOOM! With our students who are learning virtually during the first three weeks of school, we would like to **re-connect** with you and your child through Zoom in the late afternoons and/or evenings. Our Zoom chats last spring really went well for most everyone, and we would like to continue. Schedule and links can be found under the Student Life webpage <https://www.tsd.state.tx.us/apps/pages/studentlife>

Students will be invited to all three types of Zoom connections:

- **Zoom Chat** – Your child is encouraged to participate in staff-led Zoom chats. Residential Educators will set up a Zoom link and reach out to your child to check-in and provide academic and social support, if needed.

- **Zoom Sessions** – Your child’s participation is expected in Zoom Sessions. Residential Supervisors and Residential Educators will set up Zoom sessions to provide guidance and review all new safety protocols and expectations to prepare for when students’ transition from virtual learning back to in-person learning, and into student residences.
- **Zoom Activities** – Zoom activities are optional. Student Development Coordinators and Residential Educators will provide some fun activities after school through Zoom.

For those who choose to continue with virtual learning, we will continue to stay in contact with students after school through Zoom.

VISITORS

Parents/Guardians of residential students may come to campus to drop-off or pick-up your child, after communicating with residential staff and conducting required health screening. Visitors inside dorms or student residences will not be allowed until further notice. Please communicate with a Residential Supervisor before traveling to TSD to pick-up or drop-off your child.

AFTER SCHOOL PROGRAMS

TSD Office of Student Development will continue to offer after school clubs and activities for residential students only, starting September 8. Clubs and activities will be held both indoors and outdoors. Student groups will be smaller to follow required safety protocols. Students will be expected to follow proper safety protocols at all times while participating in after school clubs or activities.

Student Development will follow all health and safety guidelines, including screening procedures, social distancing, face coverings, and the number of attendees permitted.

Other large student gatherings planned by school organizations (Class of 2021, 2022, 2023, and 2024, Black Deaf Student Union, PRIDE, PAL, Jr. NAD, and Dorm Council) will be temporarily on hold until further notice, however, they may continue to meet through Zoom.

Deaf Smith Center (DSC) will be available for small group activities only. The DSC Snack Bar will be closed until further notice.

After School Programs will be limited to residential students until further notice.

ATHLETICS

TSD follows the rules of the Texas Association of Private and Parochial Schools (TAPPS). In accordance with TAPPS, the TSD high school fall sports season will begin on September 8.

Coaches, athletics staff and student-athletes will be provided training on all health and safety protocols related to the prevention and transmission of COVID-19. All coaches, athletics staff and student-athletes will practice proper and safe handling of sports equipment and gear, and follow proper social distancing and sanitizing procedures before, during and after each sports practice and game.

Face coverings are needed, especially indoors, and when not actively

performing or training.

When further TAPPS guidelines are released, more information will be shared at www.TSDRangers.com

Since for everyone’s safety, TAPPS changed the dates for fall sports, there will be no out of state sports trips during the fall season. All Deaf schools, with the support of NDIAA, have determined that the Spike-Out Volleyball Tournament will be cancelled.

If your child is interested in participating in one of the fall sports teams, please contact the following coaches for more information:

Football - TSDvftbl@gmail.com

Volleyball - TSDvarsityvolleyball@gmail.com

Cheer - TSDcheer@gmail.com

Cross Country - TSDcrosscountry@gmail.com

If you have other questions or concerns, please feel free to contact TSD Athletic Director, chris.hamilton@tsd.state.tx.us.



PARENTS’ AND CAREGIVERS’ ROLE

The support and encouragement of a parent/caregiver can be critical to a student’s success. While we ask for parent support, parents are not expected to serve as their child’s primary teacher of the academic curriculum. We ask that parents support their students by:

- Establishing a quiet, designated work space.
- Providing support and encouragement, while expecting the student to do their part.
- Ensuring that the student logs in each day and participates in class assignments.
- Monitoring that the student is staying on track with assignments and coursework.
- Maintaining communication with the teacher(s) by phone, email or online meetings.
- Completing self-assessment for your child before sending to school.

ATTENDANCE

Students participating in TSD’s virtual learning option are required to attend online classes each day, Monday through Friday. Dismissal schedules may be altered during this first three weeks of transition. Students are required to attend at least 90% of their classes to receive credit and be promoted.



SOCIAL-EMOTIONAL SUPPORT

TSD counselors, social workers and SEL Specialists will work with teachers, residential staff and principals on maintaining social-emotional health among all students. We will focus on self-awareness, self-management, responsible decision-making, social awareness and healthy relationship skills.

MENTAL AND BEHAVIORAL HEALTH SUPPORT

Mental and Behavioral Health support will be provided in both virtual and in-person learning environments with consent from parents, and in accordance with student ARDs.

Professional development will also be offered to school staff to ensure anyone you entrust your child's care to is equipped to support your student during TSD reopening.

If your child is experiencing a mental health crisis or behavioral challenges, TSD can provide resources to you as needed. Please visit our Parent Resource Page

<http://www.tsd.state.tx.us/apps/pages/parents>

DEVICE/INTERNET REQUIREMENTS

Students participating in virtual learning must have access to the Internet and a device to logon to. TSD will issue devices and/or internet hotspots to students upon request. A technical support line for technical issues will be accessible to parents and students as needed. Please call the main TSD number and IT will receive your request.

V: 512-462-5353

Txt: 512-627-0564

VP: 512-569-6324

GRADING

Students will be assessed on their mastery of IEP goals and the TEKS standards regardless of whether they are learning virtually or in-person. Teachers will conduct formative and summative assessments to track student progress. Grading practices for virtual instruction will be consistent with TSD's current grading practices for on-campus instruction.

SPECIAL EDUCATION SERVICES

TSD is considered a special education setting. All TSD students receive special education services through an IEP or 504 accommodations. TSD will ensure that students with disabilities have access to a free and appropriate public education (FAPE). We will ensure that, to the greatest extent possible, each student with a disability can be provided the special education and related services identified in the student's individualized education program (IEP).

Special education instructional and related services will be provided in accordance with the ARD/IEP either virtually or face-to-face.

Should changes need to be made to the IEP, an ARD meeting will convene. Parents / Guardians / Adult students can request an ARD at any time.

TSD will conduct a review of the student's plan of care to determine our ability to implement proper safety and health protocols which may include contacting your child's care providers for clearance.

Parents will continue to be offered the opportunity to attend ARD meetings virtually and will receive digital copies of their student's IEP.





**TEXAS SCHOOL FOR THE DEAF
REOPENING PLAN 2020-2021
TOGETHER WE WILL...**

#TogetherWeWill #WeAreTSD

www.tsd.state.tx.us

 **Twitter: @TSD_Main**   **Facebook & Instagram: @texasschoolforthe deaf**