

REOPENING PLAN

2020-2021



INDIANA
SCHOOL FOR THE DEAF

BELONG. EXCEL. THRIVE.

UPDATED: AUGUST 7, 2020

TABLE OF CONTENTS

INTRODUCTION - PAGE 3

MITIGATING SPREAD - PAGE 4

- Face Covering
- Screening Procedures
- COVID-19 Response Protocol
- School Closure
- Enhanced Cleaning
- COVID-19 Training
- School Visitations and Volunteers

FACILITY MODIFICATIONS - PAGE 8

- Protective Barriers
- Classroom Seating
- Signage
- Water Bottle Filling Stations
- Hand Sanitizer Stations
- COVID-19 Isolation Rooms
- Building Ventilation

SPECIFIC PROGRAMS/SERVICES - PAGE 9

- Case Conferences (IEP meetings)
- Transportation
 - Bus Protocol – Follow your individual district plans
 - Bus (drop off/pickup)
 - Car Riders –(drop off/pick up)
- Food Services

LIFE SKILLS - PAGE 10

- Community Based Instructions

AUDIOLOGY, SPEECH AND LANGUAGE SERVICES
OCCUPATIONAL AND PHYSICAL THERAPY
- PAGE 10

SENSORY ROOM PROTOCOL - PAGE 10

ANIMAL ASSISTED LEARNING - PAGE 11

MEDIA CENTER - PAGE 11

AFTER SCHOOL CARE - PAGE 11

AFTER SCHOOL ATHLETICS,
CLUBS AND ACTIVITIES - PAGE 11

RESIDENTIAL PROGRAM - PAGE 13

ON-SITE LEARNING - PAGE 13

- Early Childhood Education
- Elementary School
- Middle School
- High School

VIRTUAL LEARNING PLANS - PAGE 17

ROLES OF FAMILIES - PAGE 21

QUICK REFERENCE GUIDE

ASL

[COVID-19 ASL Videos - CDC](#)

[COVID-19 ASL Resource Center - ISD](#)

[7 Tips to Improve Communication with Your Deaf Teenager During COVID-19 - NDC](#)

[Talking to Kids about Coronavirus - ASDC](#)

[Public COVID-19 Resources for the Deaf Community - CONVO](#)

ENGLISH

[Get the Facts About Coronavirus - CDC](#)

[COVID-19 Remote Learning Resources - IDOE](#)

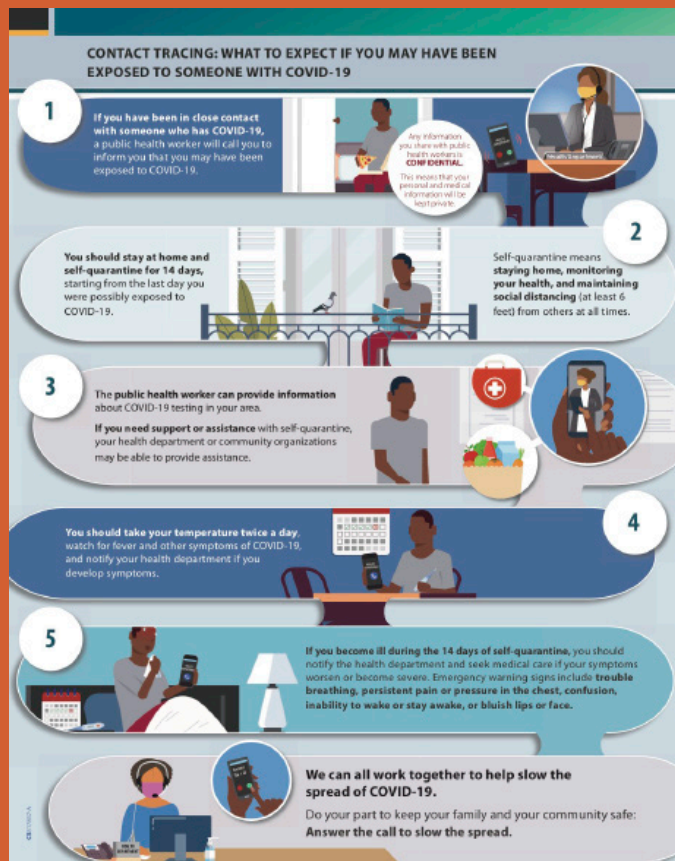
[Family Engagement Toolkit - IDOE](#)

[Talking to Kids about Coronavirus - ASDC](#)

SPANISH

[Conozca los hechos sobre el coronavirus - CDC](#)

[Toma control de tu aprendizaje en línea: Consejos para estudiantes universitarios sordos - NDC](#)



INTRODUCTION

Due to COVID-19, the Indiana School for the Deaf is working with the Governor's office, Indiana Department of Health, Indiana Department of Education, and the Centers for Disease Control and Prevention to reflect necessary health and safety measures required to prevent the spread of disease during the current pandemic. The reopening plan focuses on the well-being of students and staff to protect the health and safety of all.



Indiana State
Department of Health





at all times. Families are encouraged to provide their student with their own face covering to wear between home and school.

Properly worn face coverings (covering the nose and mouth) will be expected at the following times:

- on the buses
- entering and exiting school buildings
- in the Health Center
- during passing periods
- in the restrooms
- in classrooms, except where social distancing can be implemented

Face coverings may be removed when:

- class is being held outside and social distancing can be maintained.
- there is a quiet classroom time when there is no talking and students can stay distanced.
- students are distanced and all facing the same direction.
- there is a small group of students in the classroom that can stay distanced.

Face coverings:

- should fit snugly, but comfortably against the side of the face.
- should use the ties or ear loops to take off your mask.
- need to be breathable when wearing.
- will be washed and dried daily.

NOTE: A face shield will be available to all staff and may be required for some individuals.

MITIGATING SPREAD

ISD plays an important role in minimizing the risk and impact to each other and our operations. The health and safety of students and staff is our top priority. As a result, ISD will implement a variety of measures to keep everyone as safe as possible.

FACE COVERINGS

All students and staff are expected to wear a face covering during school hours. ISD will provide one clear face shield for all staff and students to use during the school day to provide access to effective communication. Staff and students will be responsible for the face covering provided by ISD. If it is lost or damaged, a replacement face covering will be available for purchase. The clear face shields will stay at ISD

FACE COVERINGS



EXAMPLES OF FACE COVERINGS

- Face covering should fit snugly but comfortably against the side of the face.
- Use the ties or ear loops to take off your mask.
- Make sure you can breathe while wearing the face covering.
- Wash and dry face coverings daily.

SCREENING PROCEDURES

Students

NOTE: It is the expectation of parents/guardians to send only healthy students to school each day.

Prior to the start of the school year, parents/guardians will complete a waiver indicating they will NOT send their child(ren) to school throughout the year, if they exhibit the following symptoms:

- Temperature of 100.4 or greater
- Shortness of breath or difficulty breathing
- Repeated shaking with chills
- Sore throat
- New loss of taste or smell
- Cough
- Rash
- Nausea
- Diarrhea
- Muscle pain
- Congestion or runny nose

If your student has diagnosed allergies, asthma or other chronic health conditions that would exhibit COVID-like symptoms, we encourage you to discuss this matter with your physician for any needed recommendations to return and attend school.

Staff

Staff will participate in a screening process prior to coming to work, assessing whether they should stay home from work.

Should a staff member not be working on any given day, protocols in place will determine whether COVID testing and/or quarantining is necessary, and how the absence will be categorized.



COVID-19 RESPONSE PROTOCOLS

Plans and procedures have been developed in collaboration with the Indiana State Department of Health and the Indiana Department of Education. These guidelines are fluid and are likely to change as we receive more information and work our way through the school year. Please be patient and flexible.

Exhibiting COVID-19 symptoms

If a student or staff member presents symptoms consistent with COVID-19, the individual will be sent home and presumed to have COVID-19 until such time as a healthcare provider determines the illness is caused by something else and provides a note.

Without a healthcare provider's note, the individual would need to stay home for 10 days and be fever free for 72 hours without the use of fever-reducing medication.

If a household member is referred for COVID-19 testing, all students living under the same roof should remain home from school until the findings of the COVID-19 test. If a household member tests positive for COVID-19, all students living under the same roof will remain home from school for the 10-day quarantine period.

If your student has diagnosed allergies, asthma or other chronic health conditions that would exhibit COVID-19-like symptoms, we encourage you to discuss this matter with your physician for any needed recommendations to return and attend school.

Contact Tracing

The Indiana School for the Deaf will immediately contact the Indiana State Department of Health upon learning of a positive COVID-19 case among student body and staff. The Indiana State Department of Health will lead a contact tracing and case investigation in consultation with the school to figure out the next steps.

SCHOOL CLOSURE

Due to COVID-19 pandemic, ISD and/or your child's school district may need to shift to continuous learning at home.

District Closure Due to COVID-19

If your local school district is closed due to COVID-19, your child should **NOT** follow the closure of your local school district. Your child will follow ISD's schedule. If ISD closes due to COVID-19, your child will continue learning online when this happens by following the continuous learning plans that your classroom teacher has set up. Please reach out to the classroom teacher(s) and find out what is required for the class.

[Find your school district contact information](#)

ISD Closure Due to COVID-19

ISD will announce any closure decisions due to COVID-19 via Skyward and additional communication from ISD administrators.

ENHANCED CLEANING

ISD will be utilizing enhanced cleaning and disinfecting procedures in all buildings. Housekeeping crews will focus on "high touch" points in common areas throughout the school day where bacteria or viruses

are most likely to be transmitted, which includes but not limited to:

- Desks, chairs, tables
- Door handles and push plates
- Stair rails
- Water bottle refilling stations
- Lockers
- Restrooms
- Office equipment

COVID-19 TRAINING

All staff will be provided training on safety protocols related to the prevention and transmission of COVID-19 and the proper hygiene protocols necessary for prevention.



SCHOOL VISITATIONS AND VOLUNTEERS

There will be limitations on approvals for visitations in light of the current pandemic environment, in order to maintain a safe and healthy school environment for all students and staff. ISD has implemented a safety measure required to prevent the spread of disease following recommendations from The Centers for Disease Control (CDC) and Prevention and Governor Holcomb's recommendations. Please check with your department principal or residential dean to make arrangements for your visits. All visits must be scheduled in advance and approved by the department principal or residential deans.

ISD recognizes the importance of family/guardian volunteers for the enhancement of activities and programs. There will be no volunteer opportunities in the school and residential buildings in light of the current pandemic environment, in order to maintain a safe and healthy school environment for all students and staff. ISD has implemented a safety measure required to prevent the spread of disease following recommendations from CDC and Governor Holcomb's recommendations.

For families who want to volunteer with the athletic program, please contact the athletic director directly for more information.

#INthis together

FACILITY MODIFICATIONS

Protective Barriers

Protective barriers will be installed strategically in various areas: front offices, cafeterias and other similar areas to provide another layer of protection for those working and reflects the best guidance regarding healthy interactions.

Classroom Seating

Every effort will be made to socially distance students in the classroom. Seating may be arranged to all face the same direction and/or be spaced as far apart, when possible.

Face covering will be utilized when students are not facing one direction or socially distanced.

Individual student furniture surfaces will be cleaned between use.

Signage

Handwashing signs will be posted in appropriate locations using the Centers for Disease Control and Prevention infographics on symptoms of COVID-19.

Directions for sanitizing, social distancing, and passing others will be posted in appropriate areas.

Water Bottle Filling Stations

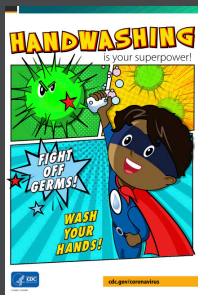
All water fountains will be turned off and covered in the buildings. Only water bottle FILLING stations will be available for students and staff throughout the day.

Students are encouraged to bring a container to use daily for water.

Hand Sanitizer Stations

Hand sanitizers will be available throughout the building, in the classrooms, and assigned areas where students are present.

SIGNAGE



COVID-19 Isolation Rooms

There are areas designated in all buildings for anyone who shows signs or symptoms of COVID-19.

ISD nurses will meet the student at the designated area and contact the parent/guardian with further information.

Building Ventilation

- All buildings will open with new, clean air filters.
- Air quality will be continuously monitored.

SPECIFIC PROGRAMS/SERVICES

Case Conference (IEP meetings)

Any meetings with teachers and staff will be held virtually or via teleconferencing, if possible.

All in-person meetings will need prior approval by administration and each person will wear a face covering during the meeting.

A case conference may be called to revise the options of virtual or in person service plans, goals, or if there are difficulties with children wearing a face covering.

Families will need to follow building safety protocols when entering the school.

Transportation

Bus Protocol from Districts

Follow your individual district plans and expectations for riding the bus.

Some districts will require a face covering to be worn and seats may be assigned.

Some districts will also require to load the bus starting at the back of the bus and moving forward.

If you have concerns related to transportation, please contact your child's district bus driver, transportation department or the LEA.

Residential students will be screened as soon as they get off the bus on Sundays and each morning during the week.

Bus (drop off/pick up)

Your child will be dropped off no earlier than 7:30am.

Students will be assigned to an area with their grade group until dismissal time.

Your child will sanitize/wash their hands when they get on or off the bus.

Your child will wear a face covering when getting on the bus and follow their district bus expectation for wearing the face covering during the ride to school and home.

All students will wait in the classroom for their transportation. Students will be called when their transportation is ready.

Car Riders (drop off/pick up)

All students are to be dropped off no earlier than 7:30 a.m.

All students will wear a face covering, wash hands or sanitize hands before going to class.

ECE at Simms Hall - Please park and walk your child into the building. Maintain social distancing and make sure a face covering is worn when dropping off your child. Staff will bring your child to class from the front office of Simms Hall.

ELEMENTARY at Simms Hall - Please wait until the child in front of you enters the building before letting your child with a face covering out of the car to provide distancing in between each child. Wait for staff at the door to indicate your child can get out of the car. All students will be assigned to an area with their cohort grade level groups until dismissed to class.

MIDDLE/HIGH SCHOOL at Willard Hall - Students will be dropped off and picked up at the front of the building. Upon exiting and entering the building students will sanitize their hands and put on their face

covering. Students will wait in the front lobby until dismissed to go to class in the morning, in the afternoon, and stay in class until staff excuse them when their transportation arrives. Outside staff will call students whose drivers are here for dismissal.

All student athletic and residential students will meet at a designated area and walk with staff to their after-school plans.

Food Services

- Breakfast and Lunch will be provided during an assigned schedule time only.
- All students will wash their hands prior to all meals.
- All ECE students will eat in the classroom.
- Elementary students will be assigned seating areas in the cafeteria and food will be brought to the student at the table.
- Elementary residential students will eat breakfast and dinner in Residential Halls.
- Salad Bars/self-serve stations will be temporarily closed.
- Floor decals will be installed to help students maintain social distancing while in the cafeteria.
- Staff wearing a face covering will supervise and check off students who receive meals in the cafeteria, keypad for the lunch code will not be used.
- Cafeteria staff will wear a face covering at all times.
- All cafeteria tables and serving lines will be cleaned between lunch periods.

Life Skills – Community Based Instructions

Community Based Instructions for the life skills program going off campus for specific instructions and lessons will continue at reduced frequency as long as health and safety protocols can be followed:

- If parents/guardians are not comfortable with participating in the CBI, then they are to notify the classroom teacher.
- The teacher will develop alternative plans for students not attending the outings.
- Students and staff will wear a face covering during the trip.
- If the student is not able to keep the face covering on, then the teacher will contact the family to discuss solutions.
- Students will ride the bus with their current class/peers.
- Students will be assigned seats on the bus by the staff.
- Busses will be sanitized after each trip.

Audiology, Speech and Language Services, and Occupational and Physical Therapies

- Services will continue to the fullest extent possible in all of the classrooms with use of social distancing and face covering when necessary.
- For services provided outside of the classroom, students will be grouped with their grade level cohort when possible and practice face covering and social distancing.
- All teachers and staff working with individual or small groups of students will be required to wear a face covering.

- Social distancing will take place as much as possible.

Sensory Room Protocol

- Items that are not easily cleaned will be removed.
- Students with their own daily sensory items will have their own container to keep everything in and not shared with others.
- Shared sensory tools will be cleaned after each use.

Animal Assisted Learning

- All animal assisted learning will be on hold until it is safe to continue.

Media Center - Media Center is closed.

- Modified services will be provided by staff requesting materials. Staff on duty will deliver materials to the classroom for teachers and students on specific days only.
- All returned materials will be cleaned prior to re-circulation.

After School Care

- After school care will be available to families with essential work schedule, that does not allow them to be home for their child after school.
- Hours of operation will be after school Monday - Thursday until 5:30 p.m., and Fridays until 4:00 p.m. - 4:30 p.m. while school is in session.
- Staff will keep areas sanitized between use.
- For more information/registration, e-mail to Jeanne Wooten, Student Life Administrative Assistant

at jwooten@isd.k12.in.us.

AFTER SCHOOL ATHLETICS, CLUBS AND ACTIVITIES

On August 15th, the Indiana High School Sports Association (IHSAA), and National Federation of State High School Associations (NFHS) are expected to move into Phase III of their protocols. This means school-sponsored large group gatherings are subject to revised guidelines pertaining to screening procedures, social distancing, face coverings and number of attendees permitted. These events include:

- Athletic Events/Competitions
- Performing Arts Productions
- Other large gatherings of clubs or organizations

All **after school clubs** (i.e. VEX, drama, chess and girl scouts) will be temporarily cancelled until further notice.

Coaches and club leaders **will be provided training** on safety protocols related to the prevention and transmission of COVID-19 and the proper hygiene protocols necessary for prevention. All coaches and athletic staff will follow proper social distancing and sanitary procedures before, during & after practices and games. This includes proper and safe handling of sport equipment and gear.

Each athlete or club participant is expected to provide his/her own water bottle using the contact less water fountain and stay hydrated. For athletes that practice/play sports outdoors (i.e. football & cross country), there will be designated water refill station(s) that meet safety guidelines. The same applies to middle school athletes in KRC. **BOTTLES WILL NOT BE SHARED.**

#TogetherApart

For the 2020-21 academic year, IHSAA approved high school student-athletes carry over completed 2019-20 IHSAA Physical Form **EXCEPT**:

- Incoming freshman student athletes
- Transferred student-athlete from another school within state OR out of state

Please refer to the Athletic Department for all updated health history, concussion and other important document requirements before start of all sports.

Hydration is important! **Please bring personal water bottle(s) for practices and games.** We have a contactless water fountain in Caskey Gym available.

Whenever possible, outside spaces will be used.

Face coverings are needed especially indoors and when not actively performing/training. Student athletes are expected to provide face coverings to participate when social distancing is not possible.

2020 ATHLETIC CAMP will be announced for August. We anticipate starting on August 9th. Families will be expected to participate in registration & orientation for the ISD High School and Middle School Athletic Camp. Dates and plans for camp are subject to change. Day students will not stay in the residential halls during camp and commute accordingly following the camp schedule provided.

Changes to fall sports schedule due to COVID-19 and for everyone's safety:

- Due to later start of athletic camp, football scrimmage scheduled on August 14th is cancelled. Per IHSAA, our student-athletes must meet five full days of practice before playing scrimmage game,

and additional five full days of practice before playing first official game.

- Our football team will not play against Alabama School for the Deaf and Model Secondary School for the Deaf. Both dates have been replaced with other local football teams.
- National Spikeout Tournament is cancelled for the 2020-2021 year.

Student-athletes are expected to stay home if they show one or more of the following symptoms:

- A fever of 100.4° F or greater
- Cough
- Shortness of breath or difficulty breathing
- Chills
- Repeated shaking with chills
- Muscle pain
- Headache
- Sore throat
- New loss of taste or smell
- Rash
- Congestion or runny nose
- Nausea
- Diarrhea

Please have the student-athlete stay home if they display ANY of the symptoms. The student-athlete should be symptom and fever-free for 72 hours without the use of fever-reducing medication before returning to activity.

STUDENT ATHLETE HYGIENE/SAFETY PROTOCOL

- Individuals will wash their hands or apply hand sanitizer immediately upon arriving on court/field

BEFORE touching any surfaces or participating in practice sessions.

- Hand sanitizer will be available to individuals during workouts, practice, or game (student athletes are encouraged to bring their own hand sanitizer).
- Student-athletes are highly encouraged to take a shower at home or in residential hall. Lockers will not be utilized. Student-athletes' practice apparel must be washed immediately after practice (and before wearing again).
- For safety of everyone, sharing personal items/space (locker) will not be allowed.
- **FAILURE TO COMPLY WITH SAFETY REQUIREMENTS, STUDENT-ATHLETE WILL NOT BE ALLOWED TO PARTICIPATE.**

Residential Program

- Each student will have their his/her own bedroom.
- Shower schedule, keeping belongings in own room, hallway direction/routes and quiet time location will be adjusted to maintain social distance.
- Once they arrive in their assigned pod, students can take their face covering off.
- Orioles Snack Bar is closed.
- Resource Center will be closed; however, resource support will be provided.
- During recreation time, students will follow social distancing and sanitary practices in between equipment usage.
- Student Work Program on campus will be temporarily suspended.
- Off campus trips will be suspended until further

notice.

- Door handles, tables, chairs, light switches, and other frequently touched surfaces in the dorm will be disinfected multiple times throughout the day.
- Residential students will have temperature checks prior to leaving for school in the morning and after school.

ON-SITE LEARNING

EARLY CHILDHOOD EDUCATION

In-person instruction will be provided at school for students who are able to follow the guidelines concerning face coverings and social distancing.

Students are expected to wear face coverings in the classroom when social distancing is not possible.

A virtual instruction option is available to families who may feel more comfortable having their student remain at home.

Students will have distanced assigned areas or individual chairs for community circle meetings.

During exploratory time, students will be placed in small groups. Each group will remain in one area for the entire exploratory time. All items in the area will be thoroughly cleaned before another group has access. Soft items, like stuffed animals, play clothing, etc., have been removed.

During learning centers, students will be placed in small groups. The students will be using their personal supplies and materials.

Students will stay with their classmates for the duration of the school day. Classes will not be combined throughout the day.

Students will eat their breakfast and lunch in the classroom, not in the cafeteria.

Recess

ECE students will participate in recess. The students will play in their class established zones. Only one class will be in each zone at a time. The established zones will be rotated with other classes weekly.

Personal Supplies and Materials

Supplies and materials may not be shared. They will be stored in individual drawer or cubby. No soft materials from home will be allowed to be brought to school (stuffed animals, blankets, etc.)

Field Trips

All field trips are suspended until further notice.

ELEMENTARY

The Indiana School for the Deaf School Board approves the school calendar for the current school year. It is subject to change.

In-person instruction will be provided at school for students who are able to follow the guidelines concerning face coverings and social distancing.

Students are expected to wear face coverings in the classroom when social distancing is not possible.

A virtual instruction option is available to families who may feel more comfortable having their student remain at home. Families are expected to commit to supporting their child daily.

Personal Supplies and Materials

Supplies and materials may not be shared. They will be stored in individual drawers or cubbies.

No soft materials will be allowed to be brought to

school. (stuffed animals, blanket, etc.)

Lockers for 5th graders will not be used for this school year.

Recess

Elementary students will participate in recess.

The grade level cohorts will stay together and play in established zones (playgrounds, fields, sidewalk) and rotate weekly.

Close contact activities are not permitted.

Each grade level will have their own equipment bag.

Cafeteria

Students will eat in the cafeteria for breakfast and lunch.

Students are expected to wear face coverings when entering/exiting the cafeteria and while seated.

There will only be two grade levels per lunch period to ensure a smaller number of students in the cafeteria.

Students will be assigned to sit at tables of no more than two people.

Utilizing the entire cafeteria with less numbers of students will allow for appropriate social distancing measures.

Special Classes (ASL-PE-ART)

Students will attend special classes as normal for in-person instruction. The students will rotate special classes weekly.

Supplies and materials will not be shared. All items will be cleaned before the next group arrives.

Walking in Hallway

Students are expected to wear face coverings while in the hallways.

Walking routes will be established (following one-way direction) to ensure social distancing.

Field Trips

All field trips are suspended until further notice.

Large Group - Elementary and Early Childhood Education

The following activities will not occur in a face to face setting until further notice:

- Open House
- Birthday & Holiday Celebration
- Friday Morning Kindness Assembly
- Student performance program (Winter & Spring)
- Family Seasonal Celebration (Fall, Winter & Spring)
- Student academic celebration
- Elementary Parent-Teacher Conference (this conference will be conducted virtually through video conferencing)
- ECE Parent-Teacher Portfolio Conference (this conference will be conducted virtually through video conferencing)
- Annual IEP/Case Conference meetings will be virtual when possible.
- PTCO breakfast and other PTCO sponsored events
- PTCO meetings will be virtual.

Social and Emotional Support

Teachers and Counselors will give developmentally appropriate lessons to ensure understanding of COVID-19 safety protocols, relationship building, managing difficult emotions and school expectations.

Assistance will be provided for students needing additional support.

If you have concerns about your student's return to school, please contact our School Counselor, Kayla LaBruno at klabruno@isd.k12.in.us.

MIDDLE SCHOOL

The Indiana School for the Deaf School Board approves the school calendar for the current school year. It is subject to change.

In-person instruction will be provided at school for students who are able to follow the guidelines related to face coverings and social distancing.

Students are expected to wear face coverings in the classroom when social distancing is not possible.

A virtual learning instruction option is available for families who feel more comfortable having their student remain at home.

Large Group Gathering

Any type of large group gathering will not be held until further notice. These events may be held via Zoom or another type of online format. These events may include: PTCO meetings, Parent-Teacher meetings, student orientations, annual case conference meetings, etc.

Field Trips

All field trips are suspended until further notice.

WE WILL GET THRU THIS
together

Passing Periods

Students are expected to wear face coverings while in the hallways.

Passing periods may be adjusted and flexibility will be given to students to allow for these changes.

ISD will be taking measures to lessen congestion in the hallways and improve conditions for social distancing. Walking routes will be established (one-way direction).

Social and Emotional Support

Teachers and Counselors will give developmentally appropriate lessons to ensure understanding of COVID-19 safety protocols, relationship building, managing difficult emotions and school expectations.

Assistance will be provided for students needing additional support.

If you have concerns about your student's return to school, please contact our School Counselor, Trisha Dray at tday@isd.k12.in.us

HIGH SCHOOL

The Indiana School for the Deaf School Board approves the school calendar for the current school year. It is subject to change.

In-person instruction will be provided at school for students who are able to follow the guidelines related to face coverings and social distancing.

Students are expected to wear face coverings in the classroom when social distancing is not possible.

A virtual learning instruction option is available for families who feel more comfortable having their student remain at home.

Large Group Gathering

Any type of large group gathering will not be held until further notice. These events may be held via Zoom or another type of online format. These events may include: PTCO meetings, Parent-Teacher meetings, annual case conference meetings and student orientations.

Field Trips

All field trips are suspended until further notice.

JEL (J. Everett Light Career Center)

As of July 13th JEL, which is housed under Washington Township Schools, will be virtual learning only. ISD will provide more details for students involved in this program once we receive them.

Passing Periods

Students are expected to wear face coverings while in the hallways.

Passing periods may be adjusted and flexibility will be given to students to allow for these changes.

ISD will be taking measures to lessen congestion in the hallways and improve conditions for social distancing. Walking routes will be established (one-way direction).

Oriole Wing Store

The store will be closed. If your child needs snacks during school day, please make sure to send healthy snacks with them.

Social and Emotional Support

Teachers and Counselors will give developmentally appropriate lessons to ensure understanding of COVID-19 safety protocols, relationship building, managing difficult emotions and school expectations.

Assistance will be provided for students needing additional support.

If you have concerns about your student’s return to school, please contact our School Counselor, Trisha Dray at tdray@isd.k12.in.us.

Middle/High School Schedule

ISD will be moving to a block schedule format. This schedule will provide less movement during the day so that students and staff can better socially distance themselves. A block schedule has the students attending four classes per day for a longer period of time. Our traditional schedule was seven periods (seven classes) approximately 52 minutes each period.

Lunch Schedule

Traditionally ISD has had two lunch periods: one for middle school and one for high school. We will add an additional lunch period this year for high school students so that half the number of students are in the cafeteria. Students will be assigned to sit at tables of no more than two people. Utilizing the entire cafeteria with less numbers of students will allow for appropriate social distancing measures.

VIRTUAL LEARNING PLANS (SCHOOL WIDE)

**VIRTUAL LEARNING FOR
EARLY CHILDHOOD EDUCATION**

- ECE families will be provided resources they can do with their child.
- Families will provide appropriate supervision of their child during Zoom meetings with staff.
- Families will participate in the process of success by regularly communicating with teachers and staff and monitoring student progress.
- Families will read aloud to their child daily and ensure access to books and other reading materials.
- Families will participate in parent education workshops provided by ISD and other agencies.

**VIRTUAL LEARNING FOR ELEMENTARY,
MIDDLE SCHOOL AND HIGH SCHOOL**

- A virtual learning instruction option is available to families who feel more comfortable having their student remain at home.
- It is expected that students will have live instruction, via Zoom, with their teacher.
- Virtual learning may be conducted using synchronous or asynchronous methods.
- Synchronous Instruction** occurs when a virtual learning student joins a live online lesson. This is direct, two-way communication which could involve:
 - a live lesson from the teacher
 - group collaboration

Community Resource Numbers



211 – Community Information and Referrals



311 – Non-Emergency Police Dispatcher



411 – Directory Assistance



511 – Traffic and Transportation Information



611 – Sorenson Customer Service



711 – State TTY Relay Service



811 – Local Utility “Call-Before-You-Dig” Service



911 – Emergency Dispatcher



988* – National Suicide Prevention Lifeline

*988 is not yet available in all areas and is available only for Sorenson customers

- presentation of projects
- live assessments of mastery- can be 1 to 1

Asynchronous Instruction occurs with one-way communication and feedback can be provided after the fact or it may not be needed at all. Examples of this kind of instruction are:

- students watching a pre-recorded lesson by the teacher
- students recording presentations that are submitted to the teacher for viewing at a later time
- posted assignments that are completed by students and uploaded for instructor feedback, etc.

Technology Access

ISD will provide an iPad for each child.

Families are responsible for high speed internet at home or a hotspot near your home.

Students are expected to have access to internet daily.

ISD will work with families who need support with internet access.

Paperwork and work packets will be sent home for those who require modified instructions and cannot participate through a virtual approach where appropriate. Teacher and parent are expected to stay in communication about the child's progress with work packets or if further support is needed.

Parent/Guardian Expectations

- Commit to supporting your child for as long as your child needs it.
- Pick up any necessary school materials from ISD. ISD will be responsible for issuing iPad as well as

providing additional necessary supports.

- Help provide a daily structure and routine for your child. We have provided suggestions for what a daily schedule could look like based upon your child's grade level found below.
- At the elementary level, read aloud to your child often and ensure access to books and other reading materials.
- Participate in the process of success by regularly communicating with teachers and monitoring your child progress by logging into the learning sites assigned to your child.
- Be open to suggested educational experiences outside of the virtual learning environment to add to your child's education.

Student Expectations

- Expected to participate in daily activities that will count towards attendance.
- Check Schoology or Seesaw or teacher assigned apps daily to see what activities are assigned to them and complete all assignments according to teacher expectations.
- Communicate regularly with teachers and respond to instructional feedback. You are also expected to reach out with any questions.
- Abide by school rules. Student participation in online courses will be closely monitored and students will be held to the same high expectations as in-person students.
- Stay organized and maintain time management with your work expectations.
- Students will follow the same assessment/testing

schedule as students who are in-person. Assessments will be administered online.

- Students using virtual learning must do so for a minimum of one quarter/9-weeks.
- Students can elect to join virtual learning at any time after the 9-week periods ends. Be sure to communicate your change requests in advance.



The Full Time Virtual Learning option will look different from the “e-learning/remote learning” experience that took place in the spring of 2020.

The chart below highlights some of these differences:

Spring 2020 “e-learning/remote learning”	Full Time Virtual Learning Fall 2020
Limited length of time	Designed to provide students with full instruction through resources developed by their online teacher.
No one failed	Students will follow standard ISD grading guidelines and expectations
Limited teacher interaction	Required teacher interaction via Zoom/VP/FT
Flexed schedule	Weekly schedules (Monday – Friday) with expected daily attendance
Directed by the IDOE and Governor’s Office	Parent and student choice
Unknown Timeline	Minimum of 9-weeks

Below are sample schedules for what the student's day will look like during virtual learning.

Please note: Final schedules for all students will be determined and administered by the student's teacher.

Sample K-5th grade day

Individual grade schedule will be modified based on child's age and academic abilities to ensure success:

- 8:00 - 8:30 a.m.: Check in Seesaw for daily assignments
- 8:30 - 8:45 a.m.: Morning meeting with teachers and students from home
- 9:00 - 9:30 a.m.: Bilingual Literacy mini-lesson (recorded)
- 9:30 - 10:30 a.m.: Independent Bilingual (Reading & ASL) practice
- 10:30 - 10:45 a.m.: Body Movement Break/Outside Break
- 10:45 - 11:15 a.m.: Math mini-lesson (recorded)
- 11:15 - 12:15 a.m.: Math independent practice
- 12:15 - 1:15 p.m.: Lunch and Break
- 1:15 - 3:00 p.m.: Writing/Science/Social Studies (rotated by daily/week)
- Prerecorded lessons
- Independent practice via online apps such as Seesaw, IXL, Microsoft Office (Word, PowerPoint, Excel), etc.

*Mini Lessons in Arts, PE and ASL will periodically be provided during the week.

*One day each week: Social Emotional Learning check in by designated staff member

*Daily 1 on 1 time for specific skill practice with staff will be scheduled

*Related service will be scheduled to address the IEP goals.

Sample 6-12th grade day

- 8:00 - 9:25 a.m. = Period 1 (Core class)
- 9:30 - 10:55 a.m. = Period 2 (Core class)
- 11:00 - 1:00 p.m. = Period 3 (Elective class)
- Lunch = 11:00 - 11:30 a.m.
- 1:05 - 2:30 p.m. = Period 4 (Core class)
- 2:35 - 3:15 p.m. = Period 5 (Focused Instructional Time)

*Related service will be scheduled to address the IEP goals.

ROLE OF FAMILIES

As ISD plans for a return to school, students may feel a bit of anxiety or fear about all of the changes. Teachers and staff will do their best to make sure that families are aware of the procedures and safety protocols to help prevent the spread of COVID-19.

Here are some of the important tips and reminders for families to discuss with their child(ren) prior to school starting:

Families will:

- help by not sending their child to school with COVID-19 symptoms.
- be notified of any new updates or changes.
- review the emails and information that are sent out.
- discuss the new changes with their child prior to returning to school.
- stay calm and positive to support the child by taking the time to chat with them about their concerns and questions without increasing their stress, anxiety or fears.

- use information as needed found on this page: <https://www.deafhoosiers.com/covid-19-community-center>
- chat with the child about the different strategies that they can practice using to keeping themselves and others safe with social distancing, wearing a face covering and hand washing.
- practice wearing face covering at home prior to sending them to school and gradually increase the amount of time they wear it.
- keep regular school routine for bedtime and wake up time prior to start of school.
- do their best to approach any behaviors in a supportive, yet consistent manner. It would not be unusual for a child to display some out of characteristic behaviors during this time of transition.

As always, ISD is here to support you and help make this a smooth transition, please reach out to your child's principal if you have concerns or questions about ISD's reopening plan.

ECE & ELEMENTARY

Sandra Wascher • ECE/Elementary Principal

EMAIL - swascher@isd.k12.in.us

VP - 317-493-0474

MIDDLE & HIGH SCHOOL

Andy Alka • Middle & High School Principal

EMAIL - aalka@isd.k12.in.us

VP - 317-493-0619



We need you to #MaskUpHoosiers! As Indiana gets Back On Track, it's still important to practice safety precautions and healthy habits to protect our neighbors. Wearing a mask helps prevent someone who unknowingly has COVID-19 from spreading the virus to others. Show us your face mask fashion and share why you choose to #MaskUpHoosiers!

NOTES: